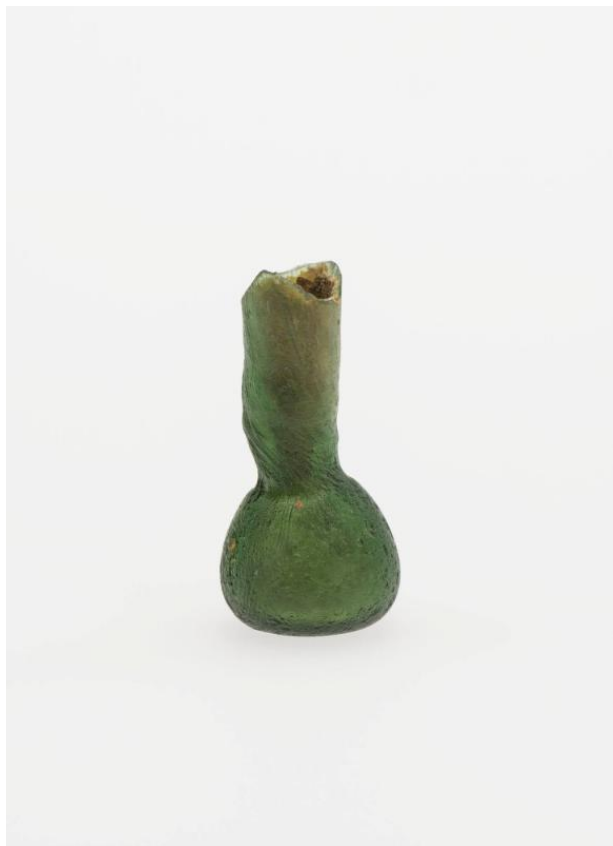


Basic Detail Report



Flask

Date

1st - 2nd century CE

Primary Maker

Unidentified artist

Medium

glass, semi-iridescent opaque, dark bluish green

Description

Rounded glass flask with flat bottom. The tall, cylindrical neck is constricted at the base.

Dimensions

3/16 x 15/16 x 7/16 in. (0.5 x 2.4 x 1.1 cm)